

LO 2.4: Which of the following can be placed in the Query's blank portion to select the "course\_name" that also contains Database Systems as its ending string

```
SELECT student_name  
FROM course  
WHERE course_name LIKE '____ Database Systems
```

- %
- 
- &
- S

يمنع الانتقال إلى السؤال التالي إجراء تغييرات على هذه الإجابة. ⚠️

?LO 2.4: Which SQL keyword is used to sort the result-set

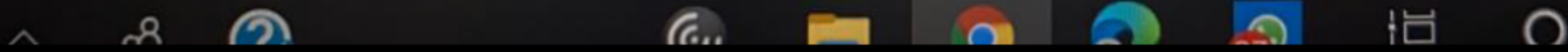
Order By

Group By

Sort By

Insert By

⚠ يمنع الانتقال إلى السؤال التالي إجراء تغييرات على هذه الإجابة. ←



Remaining Time: 13 minutes, 16 seconds.

Question Completion Status:

Save and Submit

Question 8 of 8

Click **Submit** to complete this assessment.

Question 8

1 points

Save Answer

LO 2.4: The \_\_\_\_\_ operation is used to change the values of one or more attributes in a tuple (or tuples) of some relation R.

- update
- delete
- insert
- modify

Question 8 of 8

Click **Submit** to complete this assessment.

Save and Submit

Remaining Time: 15 minutes, 37 seconds.

Question Completion Status:

⚠ Moving to the next question prevents changes to this answer.

**Question 7**

LO 2.2: In the relational design, when mapping ER model to relational model, entities are represented by \_\_\_\_\_

Attributes

Columns

Relations

Tuples

⚠ Moving to the next question prevents changes to this answer.

تنشيط Windows

انتقل إلى الإعدادات لتنشيط Windows

عرض الكل

٩:١٥ م  
٤٢/٠٨/٢٤



DELL

↳ ⚠ Moving to the next question prevents changes to this answer.

### Question 7

---

LO 2.2: When  $F$  is a set of functional dependencies, then the closure of  $F$  is denoted by?

- $F^+$
- $F$
- $F_0$
- $F^*$

⚠ Moving to the next question prevents changes to this answer.

Remaining Time: 30 minutes, 50 seconds.

Question Completion Status:

⏪ ⚠ Moving to the next question prevents changes to this answer.

#### Question 4

LO 2.4: With SQL, Which operator is used to select values within a range?

- Between
- Sort
- Range
- Within

⏪ ⚠ Moving to the next question prevents changes to this answer.



↳ ⚠ Click **Submit** to complete this assessment.

### Question 8


LO 2.2: If  $x \rightarrow y$  and  $y \rightarrow z$ , where  $x$ ,  $y$  and  $z$  are attributes in the relation  $R$ , then  $x \rightarrow z$  is called \_\_\_\_\_ Dependency.

- Transitive
- Partial
- Full
- Initial

↳ ⚠ Click **Submit** to complete this assessment.

LO 2.2: In the relational design, when mapping ER model to relational model, entities are represented by \_\_\_\_\_

- Tuples
- Relations
- Columns
- Attributes
- 

↳  Click **Submit** to complete this assessment.





?LO 2.4: Which one of the following is not a schema-based constraint

- Key Constraint
- Domain Constraint
- Entity integrity Constraint
- Functional Dependency Constraint

يمنع الانتقال إلى السؤال التالي إجراء تغييرات على هذه الإجابة. ⚠

↳ ⚠ Moving to the next question prevents changes to this answer.

### Question 5

LO 2.4: A relation schema  $R$  of  $n$  attributes is denoted by \_\_\_\_\_.

$R(A_1, A_2, \dots, A_n)$

$r = \{t_1, t_2, \dots, t_n\}$

$n(R)$

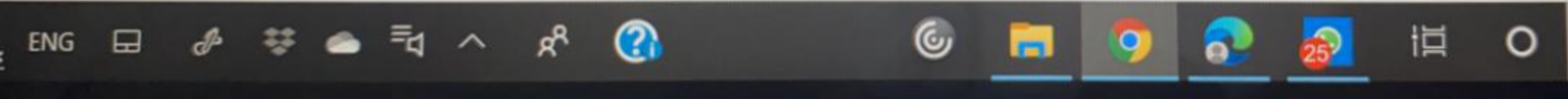
$S = \{R_1, R_2, \dots, R_n\}$

↳ ⚠ Moving to the next question prevents changes to this answer.



LO 2.4: If a deletion operation causes a violation, an option called \_\_\_\_\_, is to attempt to propagate the new primary key value into the foreign keys of the referencing tuples

- allow
- cascade
- set Null
- restrict



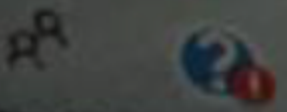
↳ ⚠ Moving to the next question prevents changes to this answer.

### Question 6

LO 2.4: Which one of the following is not a schema-based constraint?

- Domain Constraint
- Entity integrity Constraint
- Key Constraint
- Functional Dependency Constraint

↳ ⚠ Moving to the next question prevents changes to this answer.



## Question 7

1 points

Save Answer

LO 2.4: A relation schema  $R$  of  $n$  attributes is denoted by \_\_\_\_\_.

- $r = \{t_1, t_2, \dots, t_n\}$
- $R(A_1, A_2, \dots, A_n)$
- $n(R)$
- $S = \{R_1, R_2, \dots, R_n\}$

Question 7 of 8



⚠ Moving to the next question prevents changes to this answer.

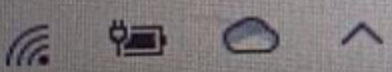
... question prevents changes to this answer.

### Question 5

LO 2.2: If an attribute A is a **member** of some candidate key in a relation schema R, then A is called \_\_\_\_\_.

- Prime
- Partial
- Non-partial
- Nonprime

↳ ⚠ Moving to the next question prevents changes to this answer.



answer after submission are prohibited.

Question 6 of 8 >

⚠️ Moving to the next question prevents changes to this answer.

### Question 6

4 points

Save Answer

LO 2.2: The following relation is already in first normal form (1NF), but not in Second normal form (2NF).

BOOK (Book\_title, Author\_name,  
Publisher, Book\_type, Author\_Institute,  
Author\_department)

Suppose the following dependencies exist:

FD1: Book\_title, Author\_name → Publisher

FD2: Book\_title → Book\_type

FD3: Author\_name → Author\_Institute,  
Author\_department

- Explain why the above relation it is not in 2NF.

- Convert the above relation to the second normal form (2NF) and identify the primary key for each decomposition.

Attach File

Browse My Computer

Question 6 of 8 >

⚠️ Moving to the next question prevents changes to this answer.



↳ ⚠ Moving to the next question prevents changes to this answer.

#### Question 4

LO 2.2: The following relation is already in first normal form (1NF), but not in Second normal form (2NF).

Course (CourseNo, CourseName, Coordinator, Credit, InstructorName, InstructorDepartment)

Suppose the following dependencies exist:

FD1: CourseNo, CourseName → Coordinator

FD2: CourseNo → Credit

FD3: CourseName → InstructorName, InstructorDepartment

- Explain why the above relation it is not in 2NF.

- Convert the above relation to the second normal form (2NF) and identify the primary key for each decomposition.

Attach File

Browse My Computer

↳ ⚠ Moving to the next question prevents changes to this answer.



⏪ ⚠ Moving to the next question prevents changes to this answer.

### Question 5

LO 2.4: Which of the following can be placed in the Query's blank portion to select the "course\_name" that also contains Database Systems as its en

```
SELECT student_name
```

```
FROM course
```

```
WHERE course_name LIKE ' _____ Database Systems';
```

- &
- \$
- 
- %

Windows تنشيط

⚠ Moving to the next question prevents changes to this answer.

↳ ⚠ Moving to the next question prevents changes to this answer.

### Question 6

LO 2.2: The following relation is already in first normal form (1NF), but not in Second normal form (2NF).

Article (Article\_title, Writer\_name, Publisher, Article\_type, Writer\_Institute, Writer\_department)

Suppose the following dependencies exist:

FD1: Article\_title, Writer\_name → Publisher

FD2: Article\_title → Article\_type

FD3: Writer\_name → Writer\_Institute, Writer\_department

- Explain why the above relation it is not in 2NF.

- Convert the above relation to the second normal form (2NF) and identify the primary key for each decomposition.

Attach File

Browse My Computer

↳ ⚠ Moving to the next question prevents changes to this answer.

↳ ⚠ Moving to the next question prevents changes to this answer.

### Question 3

LO 2.4: Which of the following can be placed in the Query's blank portion to display the mark from highest to lowest amount, and sorting the student's name alphabetically?

SELECT \*

FROM student

ORDER BY mark \_\_\_\_, student\_name \_\_\_\_;

Desc, Asc

Dec, Inc

Asc, Desc

Inc, Dec

↳ ⚠ Moving to the next question prevents changes to this answer.

1 points

Question 3 of 3

2090dd731c0a27c...pdf

2080ad731c0a27c...

اكتب هنا للبحث

Question Completion Status:

⏪ ⚠ Moving to the next question prevents changes to this answer.

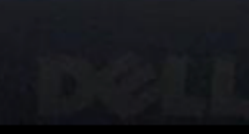
Question 2

LO 2.4: The attribute (or set of attributes) that uniquely defines each row in a table is called the \_\_\_\_\_.

- Index
- Primary key
- Symmetric key
- Identifier

Windows تنشيط

⚠ Moving to the next question prevents changes to this answer.



↳ ⚠ Moving to the next question prevents changes to this answer.

### Question 7

LO 2.2: The following relation is already in first normal form (1NF), but not in Second normal form (2NF).

Course (CourseNo, CourseName, Coordinator, Credit, InstructorName, InstructorDepartment)

Suppose the following dependencies exist:

FD1: CourseNo, CourseName → Coordinator

FD2: CourseNo → Credit

FD3: CourseName → InstructorName, InstructorDepartment

- Explain why the above relation it is not in 2NF.

- Convert the above relation to the second normal form (2NF) and identify the primary key for each decomposition.

Attach File

↳ ⚠ Moving to the next question prevents changes to this answer.

### Question Completion Status:

Question 5 of 8 &gt;

Moving to the next question prevents changes to this answer.

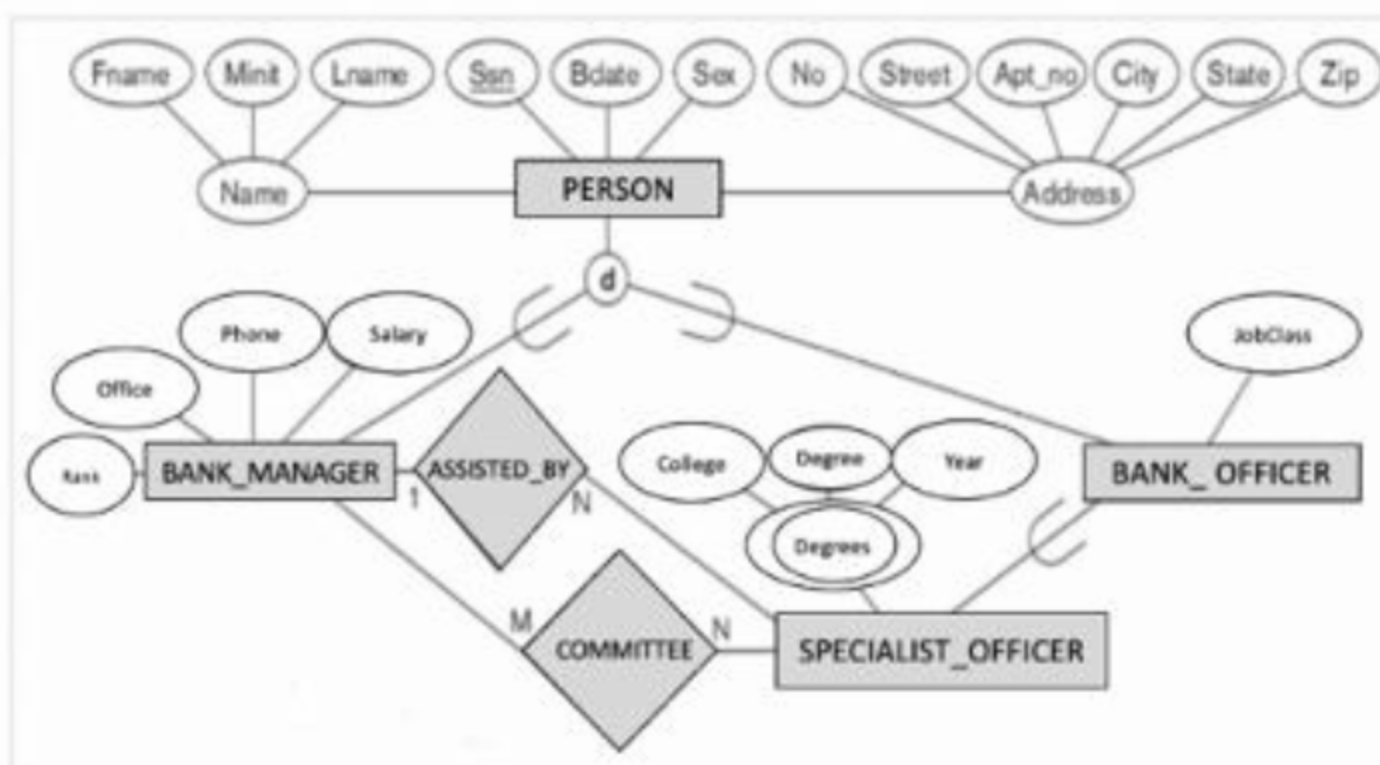
### Question 5

5 points

Save Answer

LO 2.2: Map this EER diagram into a relational schema. Indicate the foreign keys by using an arrow from the foreign key to the primary key and specify the step used in the mapping.

- Use the option 8a for the generalization between PERSON, BANK\_MANAGER and BANK\_OFFICER.
- Use option 8d for the generalization between BANK\_OFFICER and SPECIALIST\_OFFICER.



Attach File

Browse My Computer

Question 5 of 8 &gt;

Moving to the next question prevents changes to this answer.

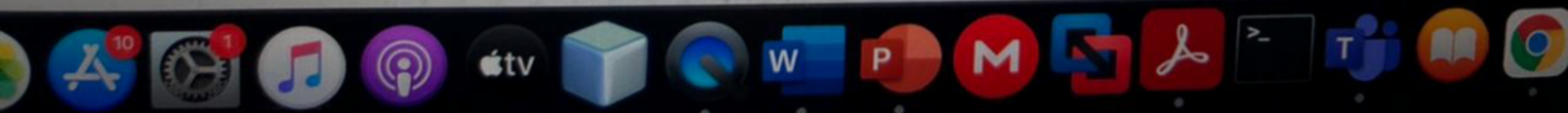
↳ ⚠ Moving to the next question prevents changes to this answer.

### Question 3

LO 2.2: Which normal form is based on Multi Valued Dependency?

- 3NF
- 2NF
- 5NF
- 4NF

↳ ⚠ Moving to the next question prevents changes to this answer.



LO 2.4: Which of the following can be placed in the Query's blank portion to display the mark from highest to lowest amount, and sorting the student's name alphabetically

SELECT \*

FROM student

ORDER BY mark \_\_\_\_, student\_name \_\_\_\_;

Desc, Asc

Dec, Inc

Inc, Dec

Asc, Desc

⏪ ⚠ Moving to the next question prevents changes to this answer.



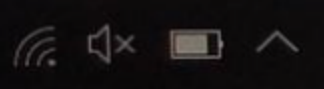
↳ ⚠ Moving to the next question prevents changes to this answer.

### Question 5

LO 2.4: The attributes in relation that have the same domain(s) as the primary key attributes in other relation is called \_\_\_\_\_.

- foreign key
- identifier
- primary key
- index

↳ ⚠ Moving to the next question prevents changes to this answer.



→ ⚠ Moving to the next question prevents changes to this answer.

### Question 3

LO 2.4: Which SQL statement is used to insert new data in a database?

- Insert into
- Insert new
- Insert in
- Insert to

→ ⚠ Moving to the next question prevents changes to this answer.

backtracking. Changes to the answer after submission are prohibited.

Remaining Time: 54 minutes, 12 seconds.

Question Completion Status:

Question 3 of 8 >

⚠ Moving to the next question prevents changes to this answer.

### Question 3

1 points

Save Answer

LO 2.4: Which SQL keyword is used to sort the result-set?

- Group By
- Order By
- Sort By
- Insert By

Question 3 of 8 >

⚠ Moving to the next question prevents changes to this answer.

Multiple Attempts Not allowed. This test can only be taken once.  
Force Completion This test can be saved and resumed at any point until time has expired. The timer will continue to run if y  
This test does not allow backtracking. Changes to the answer after submission are prohibited.

Remaining Time: 55 minutes, 50 seconds.

Question Completion Status:

⏪ ⚠ Moving to the next question prevents changes to this answer.

### Question 1

LO 2.2: The following relation is already in first normal form (1NF), but not in Second normal form (2NF).

Article (Article\_title, Writer\_name, Publisher, Article\_type, Writer\_Institute, Writer\_department)

Suppose the following dependencies exist:

FD1: Article\_title, Writer\_name → Publisher

FD2: Article\_title → Article\_type

FD3: Writer\_name → Writer\_Institute, Writer\_department

- Explain why the above relation it is not in 2NF.
- Convert the above relation to the second normal form (2NF) and identify the primary key for each decomposition.

Attach File

Browse My Computer

⏪ ⚠ Moving to the next question prevents changes to this answer.



⚠ Moving to the next question prevents changes to this answer.

### Question 1

LO 2.4: Which of the following can be placed in the Query's blank portion to display the mark from highest to lowest amount, and sorting the student's name alphabetically?

SELECT \*

FROM student

ORDER BY mark \_\_\_\_, student\_name \_\_\_\_;

Dec, Inc

Desc, Asc

Inc, Dec

Asc, Desc

⚠ Moving to the next question prevents changes to this answer.

↳ ⚠ Moving to the next question prevents changes to this answer.

### Question 3

---

LO 2.4: Which SQL keyword is used to sort the result-set?

- Group By
- Order By
- 
- Sort By
- Insert By

↳ ⚠ Moving to the next question prevents changes to this answer.

Question Completion Status:

⚠ Moving to the next question prevents changes to this answer.

Question 1

LO 2.4: If a deletion operation causes a violation, an option called \_\_\_\_\_ is to attempt to propagate the new primary key value into the foreign keys of the referencing tuples

- cascade
- set Null
- allow
- restrict

⚠ Moving to the next question prevents changes to this answer.



↳ ⚠ Moving to the next question prevents changes to this answer.

### Question 2

---

LO 2.4: Which of the following creates a virtual relation for storing the query?

- Procedure
- Table
- Schema
- View

↳ ⚠ Moving to the next question prevents changes to this answer.



